

Hunchback Correction Belt

Improve hunchback/chest/waist fatigue



Adjustable Velcro to correct hunchback



Open back and chest high elastic material



Breathable fabric to enhance image and temperament



Thin to stealth



Soft and fit



Breathable fabrics

Special Design

THE BONE DOCTOR

Crossed Wings **Even by force**

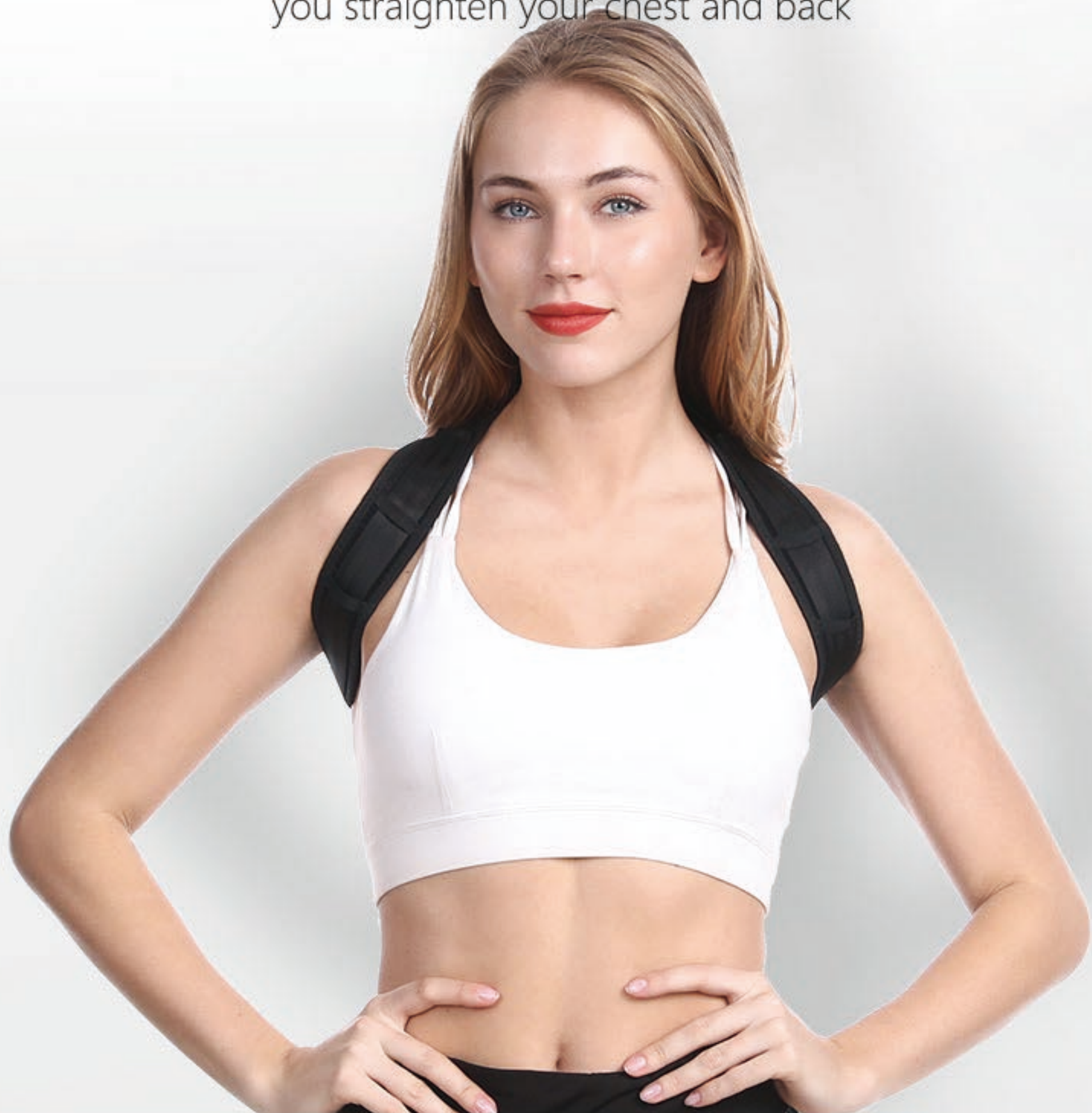
It adopts double-wing appearance design, integrating beauty and comfort, and correcting posture is more humanized.



THE BONE DOCTOR

tall and straight
**Open shoulders and
broad chest**

360° surround all-round shaping Y cross-leads help
you straighten your chest and back



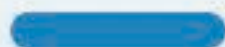
Correction Principle

The product adopts 8-shaped design + double Y surround, one-piece molding, 8-shaped open shoulders and double Y stretch, according to your own needs, wear both sides and tighten at the same time.



Front Pull

Shot hook design

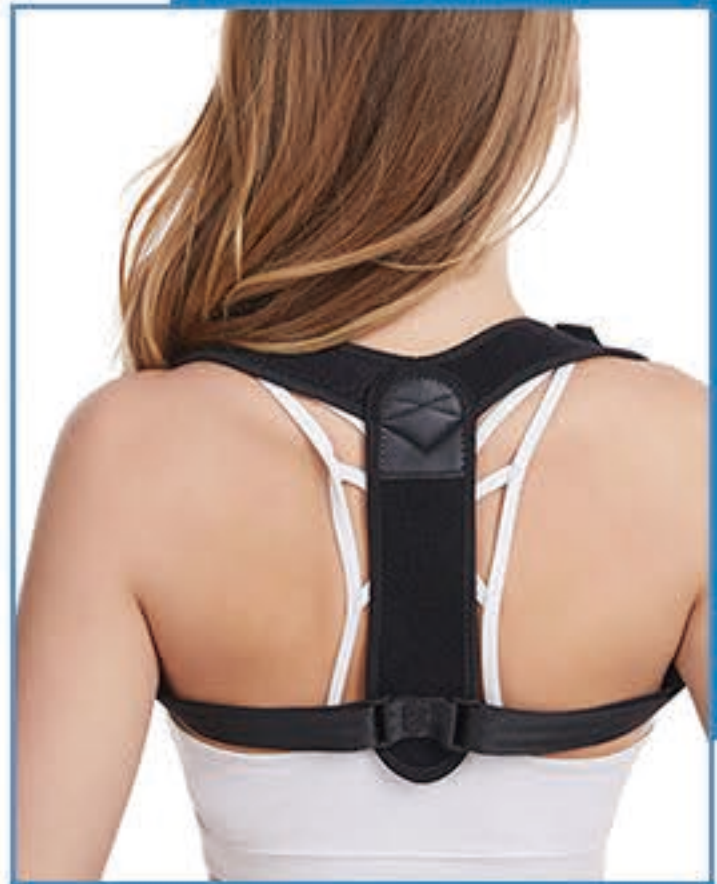


Front-pull shoulders and straight back, invisible wearing, tall and straight posture



Product Information

Product Name	Posture Corrector
Product Features	Light, breathable and comfortable
Color	Black
Surface Material	Submersible compound OK cloth
Gauge	one size
Air Permeability index	Breathable
Thickness index	Moderate



Product Details



High adhesive Velcro

10,000 times pasting,
always the same

Fixed square buckle design

Fixed position, correct fit





Adjust the webbing

Adjust the webbing

Wear Effect





